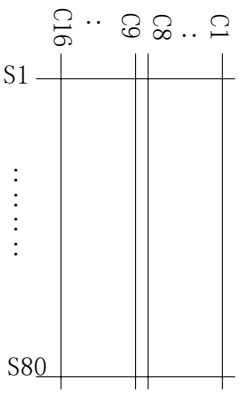
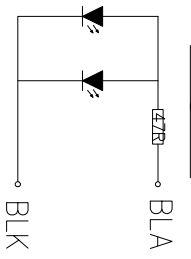


Terminal No.	Pin
1	VSS
2	VDD(5V)
3	V0
4	RS
5	R/W
6	E
7	DB0
8	DB1
9	DB2
10	DB3
11	DB4
12	DB5
13	DB6
14	DB7
15	BLK
16	BLA(5V)

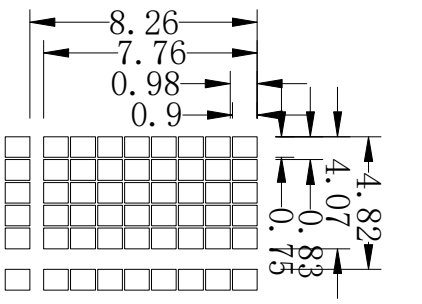
Wiring Dwg



BL Circuit Diagram



Pixel Dwg



*1. LCD Display Type	STN-YG, Positive, Transflective	*6. Storage Temp	-30° C~80° C
*2. Viewing Direction	12H	*7. Driver IC	ST7066U-0A-B(英日文)
*3. LCD Driver Mode	1/16Duty, 1/5Bias	*8. Backlight	Y-G VF=3, IV If=40mA
*4. Operating Voltage	5V	*9. ROHS	YES
*5. Operating Temp	-20° C~70° C(Wide Temp)		

HOT DISPLAY

Dwg Title: 1602-9C V01

EPC No: 10300102

Scale 1:1 Unit mm

Drawn Checked

Ver: A/0

Tol. ±0.3

Date: 2023-2-28